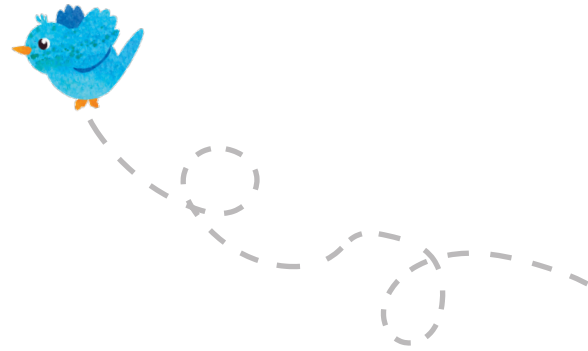


Kids STEAM CRAFT SHEEP SENSORY BAG



Materials Needed:

- 2 Wiggle Eyes
- Ziploc Bag
- Bottle of Clear Hair Gel
- Cotton Balls
- Sharpies



Instructions:

- 1 Draw your sheep on the bag. If your child is too young to draw, have them pick out the desired picture for you to trace.
- 2 Fill the bag with the entire bottle of clear hair gel.
- 3 Add cotton balls and the wiggle eyes to the bag.
- 4 Lay the bag flat on a hard surface and watch your child play!

